

### BUILDING A JIG USING THE IN-LINE SPEED CLAMPS & ACCESSORIES

For more information (instruction movies, jigs ideas, FAQ and other) please visit our website – [www.trigon-tools.com](http://www.trigon-tools.com)

#### Tools you need to build your own jig

- Wood plate
- Router tool and 7/8" (or smaller) diameter router cutter
- Square tool
- Drill bits and power drill
- Marking pencil
- Measuring tape
- #6 wood screws



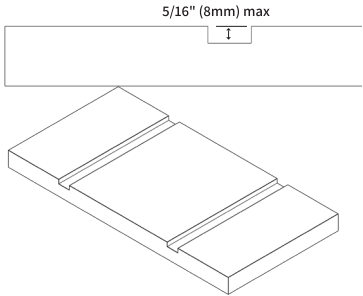
**Attention, before you adjust your power tool, make sure they unplugged, always wear protective gear such as safety glasses and working gloves.**



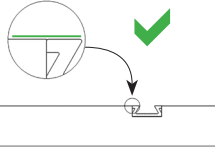
Patent pending  
several patents

-1-

- Routing the D-track grooves- the cutter bit cutting depth should be slightly less than the D-track height (slightly less than 5/16"), adjust the router fence to the dimension you want the groove to be and rout out the groove.
- Repeat to make all of the grooves in the wood plate.

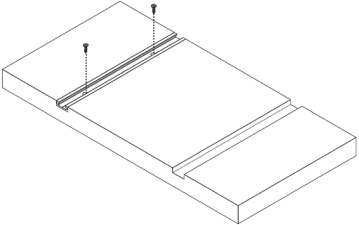


Place the D-track in the groove and check that the D-track is not below your wood surface

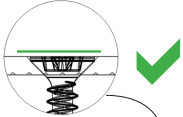
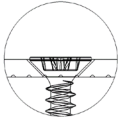


-2-

**Screw the D-track to the groove using #6 wood screws**

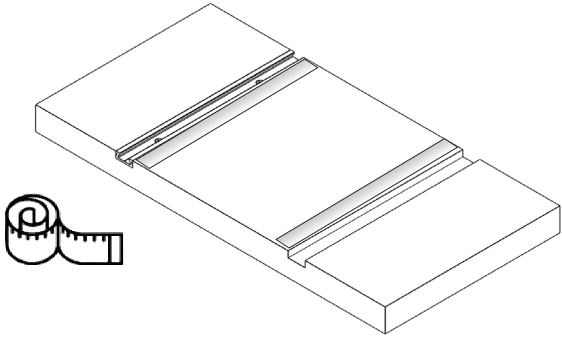


**Make sure the screws don't protrude above the aluminum**



-3-

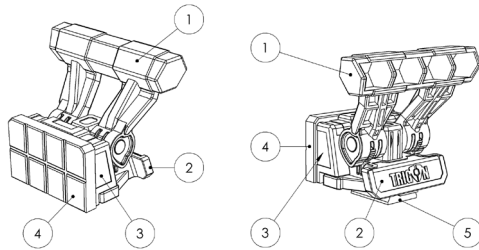
**Attach the self adhesive measuring tape**



-4-

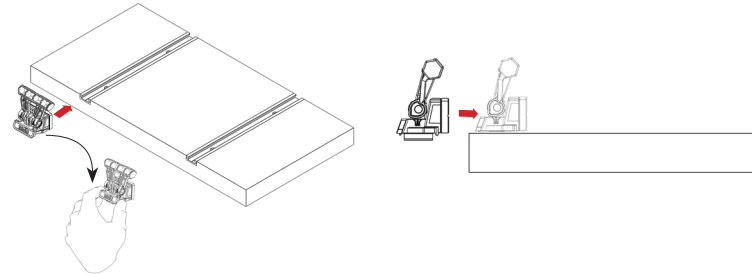
## How to use the IN-line speed clamp system

1. Handle lever
2. Sliding body
3. Jaw
4. Jaw rubber
5. Friction plate



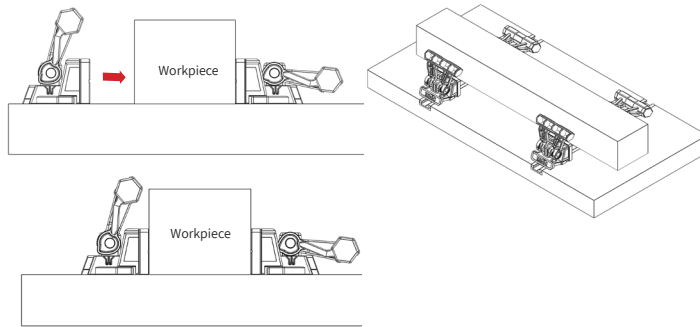
-5-

- Slide in to the D-track the In-line speed clamps- make sure the handle lever (1) of the clamp is in upright position (unlock)
- Slide the in-line clamps from behind of the sliding body (2), make sure the handle lever (1) is in an upright position-unlock



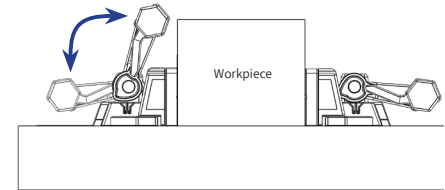
-6-

- Locate your workpiece
- Slide the In-line clamp from behind until the jaw (3) makes contact with the workpiece



-7-

- Press the handle lever (1) down (a click sound will generate while clamping force is progress)
- To release- lift the handle lever (1) to upright position by grabbing the lever from its sides or under



### SPECIFICATIONS

#### In- line clamp

- General dimensions- W 1.77" (45mm) X H 1.1" (28mm) X L 2.6" (67mm)
- materials- jaw rubber-TPE, pivot and screw-stainless steel 304, friction plate-aluminum, plastic body- glass fiber reinforced Polyoxymethylene
- Clamping force 125Lb (57kg)

#### D-track

- General dimensions- W 7/8" (22mm) x H 5/16" (8mm)
- Material- aluminum 6063-T5
- Length 18"(450mm)

-8-